

1600 Series

OEM HOSE REELS

Versatile symmetric design minimizes reel dimensions and provides a robust platform for any application. Feature-rich with nearly endless component configurations.

OEM SPECIALITY FEATURES

- LOCKS
- IDLER GEARING
- CLUTCHES
- HANDLE HOLDERS
- REWIND ACTUATORS
- SEVERAL BRAKE OPTIONS
- CHAIN, BEVEL & SHAFT GUARDS
- SPECIALITY OUTLET FITTINGS
- MALE AND FEMALE OUTLETS
- MULTI-ANGLE ROLLERS AND CRANKS

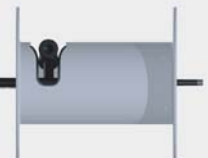


HYBRID FRAME

The strength and weight of an A-Frame with the options and versatility of a Box-Frame

LOW PROFILE RISER & DRUM SLOT

Maintains maximum capacity and smooth hose wraps



ALL METAL CAST GEARS & PINION

Ensures maximum longevity and durability of drive system



SOLID SPUN DISCS WITH ROLLED EDGES

Made with CNC robotic spinning cell with strength ribs and dished center - Not Stamped



INTEGRAL COMPRESSED DRUM

360° fully supported drum on dished disk centers is compressed onto disks for maximum drum rigidity.



HIGH QUALITY LIVE SWIVELS

Medium and high pressure full flow swivels in 1" and 1.5" sizes



SELF LUBRICATING BEARINGS

Integrated self-aligning and fixed no maintenance bearings for long life



ULTIMATE CORROSION RESISTANCE

Individually CPC powder coated components form a flexible barrier against corrosive elements

DEPENDABLE DRIVE SYSTEMS

Chain and sprocket drive systems ensure dependable, smooth rewind operation under the toughest conditions



Hose Reel Specialists

+44 (0) 1536 407 001 SALES@REELCARE.CO.UK WWW.REELCARE.CO.UK

1600 SERIES FEATURES

SWIVEL

- 90° Swivel Seals: AFLAS
- Inline Swivel Seals: NITRILE
- Other Available Seals: EPDM, VITON®

DESIGN & STRUCTURE

- Welded hybrid side frames with bolted cross-members, and accessories
- Exclusive low profile outlet riser & open drum slot design for flat smooth hose wrap
- Adjustable tension brake to prevent “free-wheeling” during operation
- Long-handled locking pin to secure reel from rotation during transport or storage

RETRACTION

- Reliable chain & sprocket drive on motor driven models
- Solid steel direct hand crank with smooth round handle
- All metal bevel crank and gear construction

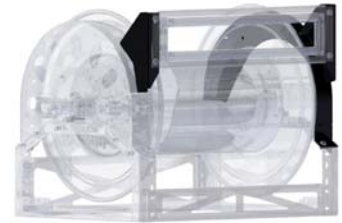
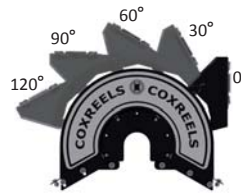
ROLLER GUIDE KITS

- Order roller guides alone for bottom payout or with Top Roller Mount Kit 165XX or Universal Roller Mount Kit 164XX
- When used as bottom rollers, replaces front cross brace
- Works with all guards, brackets and accessories
- Default kit color is Black, use color suffix* to order other color
- For 4-way roller R = 7/16" (11mm)
- For 3-way roller R = 2 5/8" (67mm)
- The dimension H does not change when rollers are mounted with top roller mounts



ROLLER MOUNT KITS

Multiple Mount Positions



3-WAY PIN LOCK KIT

3 Position - Pin locks reel with heavy duty 3/4" solid steel pin. Disengages for free unwind. Can be used to activate switch for electric rewind.

| 16702 | 3 Positions - Lock, Free, Rewind |
|-------|---|
| | <ul style="list-style-type: none"> • Default orientation is with pin lock lever on left side of reel • Requires Front Bracket 16212 or Universal Bracket 16400 • Requires Sprocket Kit 16301-122 or Pin Lock Ring 6301 • In locked position, does not protrude past front of reel • Easily clears brackets and guards for gloved-hand operation • Activates switch 20876 in Switch Control Kit 16780-XX • Use suffix “-REV” after part number to order reverse orientation • Includes pad lock provision for locking out reel • Dimension C = 2.625 [70mm] |



Idler Gears

Idler gears reduce drum speed and increase torque. Available in three sizes, they are factory installed on the motor kits. When ordering motor kits with idler gear, add the suffix “V#” where “#” is the gear ratio number. The shaft of the idler must be extended to use accessories such as brakes, to extend shaft replace “V” with “W”

| | Direct Drive (No Idlers Gear) | | 1:2 Idler Gear Replace # with (2) | | 1:3 Idler Gear Replace # with (3) | | 1:4 Idler Gear Replace # with (4) | |
|--------------|----------------------------------|-------------------------|--------------------------------------|-------------------------|--------------------------------------|-------------------------|--------------------------------------|-------------------------|
| Sprocket Kit | Drum RPM | Motor Torque Multiplier | Drum RPM | Motor Torque Multiplier | Drum RPM | Motor Torque Multiplier | Drum RPM | Motor Torque Multiplier |
| 16300-122 | 53 RPM | X12 | 29 RPM | X22 | 20 RPM | X33 | 15 RPM | X44 |
| 16300-138 | 47 RPM | X14 | 26 RPM | X25 | 17 RPM | X38 | 13 RPM | X50 |
| 16300-180 | 36 RPM | X18 | 20 RPM | X33 | 13 RPM | X49 | 10 RPM | X65 |

Accessory 3-WAY BRAKE KIT - (Lock, Drag, Free)

| | |
|--|--|
| | <ul style="list-style-type: none"> • A 3-position brake with lock, friction and free spinning positions • Installs on extended idler shaft of “W” idler equipped motor kit • Guard available - Euro Brake Guard Kit 16603 • Easily clears brackets and guards for gloved-hand operation • In locked position, does not protrude past front of reel • -REV configuration requires no different parts • When used with Handle Holster 16704, mounted on opposite side |
|--|--|

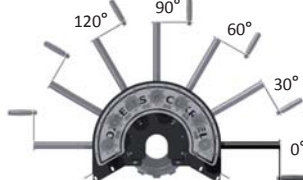
| 16703 |
|-------|
| |



Universal Bracket Kit

16400

Multiple Mount Positions



Bevel Gear Crank Kit (Front Crank)

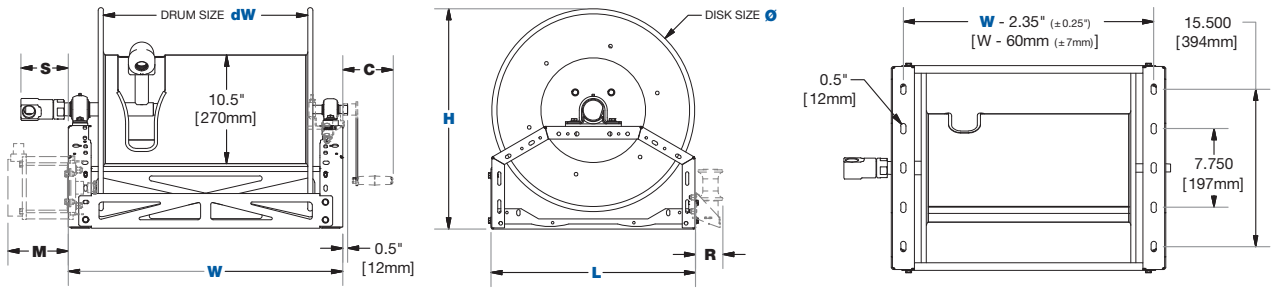
16211



- Includes aluminum bevel & brass pinion gears, brake assembly and crank handle
- Dimension C = 2.625 [70mm]
- Steel components are powder coated black
- Installs to either side of reel, works with all guards and accessories
- Requires Bracket 16212 or 16400
- For stringent guarding use Shaft Guard 16604



1600 SERIES SPECIFICATIONS



| MODEL | DIMENSIONS | | PRESSURE | | FLUID PATH | | | SWIVEL | | |
|-----------|------------|-----|----------|-----|------------|--------------------------|----------------------------|---------|---------------------------------|---------------------|
| | S | | PSI | BAR | INLET | MATERIAL | OUTLET | | MATERIAL | INLET |
| in | mm | | | | | | | | | |
| 1660-XXXX | 4.75 | 120 | 4000 | 275 | 1" | Steel or Stainless Steel | Female or Male NPT or BSPP | 90 Deg. | Plated Steel or Stainless Steel | Female, NPT or BSPT |
| 1680-XXXX | 6.75 | 170 | 3000 | 200 | 1.5" | Steel or Stainless Steel | Female or Male NPT or BSPP | 90 Deg. | Plated Steel or Stainless Steel | Female, NPT or BSPT |
| 1681-XXXX | 1.63 | 40 | 600 | 40 | 1.5" | Steel or Stainless Steel | Female or Male NPT or BSPP | In-Line | Aluminum | Female, NPT or BSPT |

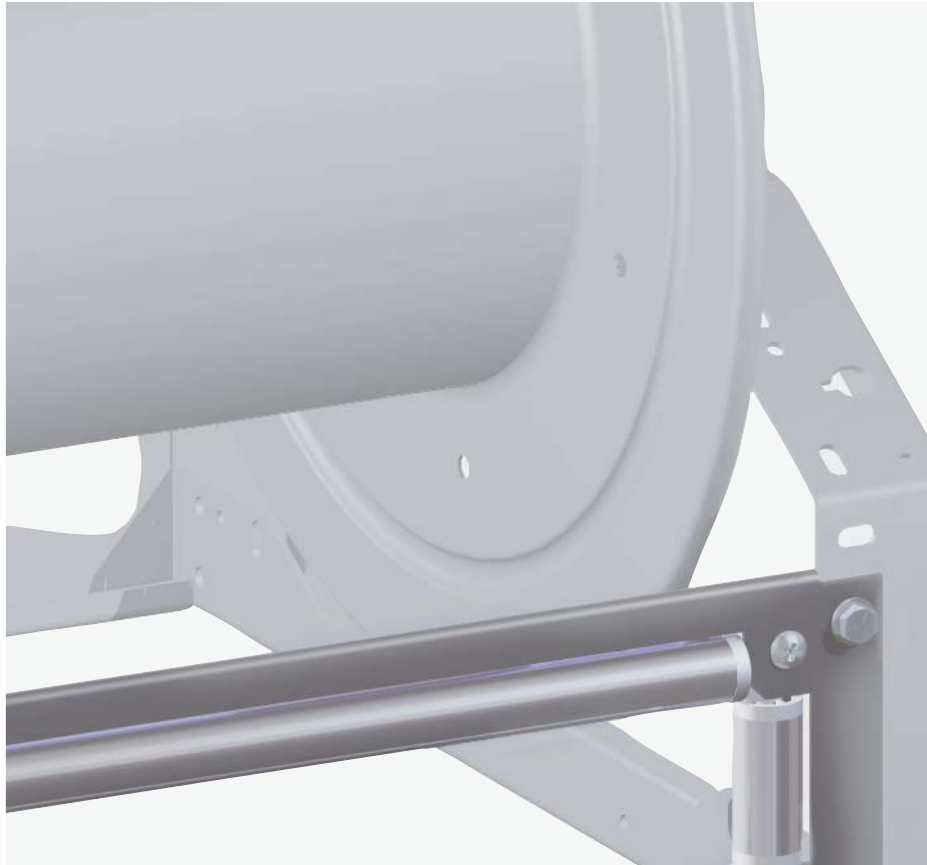
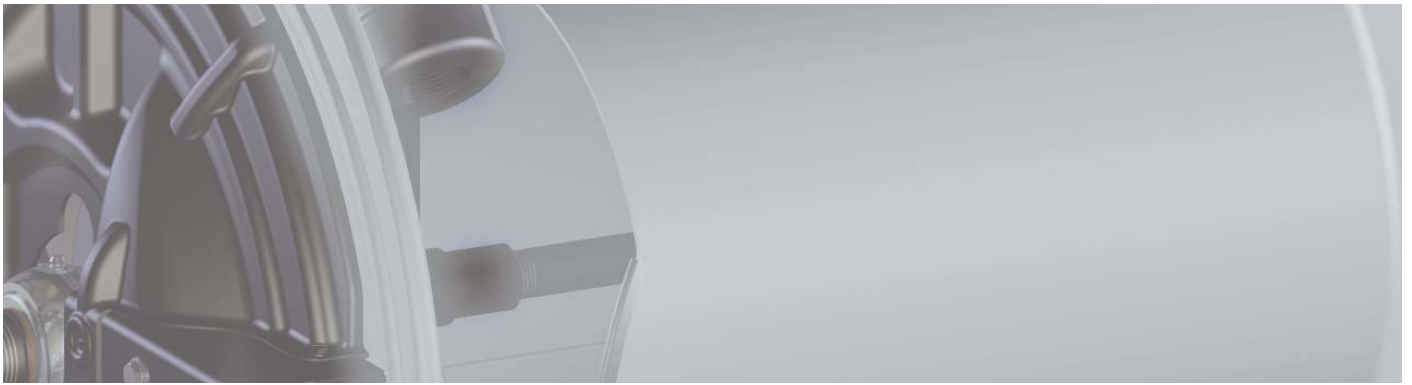
| MODEL | DIMENSIONS | | | | | | CAPACITY | | | | | | | | | | | | |
|----------|------------|------|-----|----|-----|------|----------|-------|-----|-------|-----------------|-----------------|-----------------|-----------------|-----------------|-----|----------------|-----|----|
| | dW | | Ø | | W | | H | | L | | I.D. .75" 19mm | | I.D. 1" 25mm | | I.D. 1.25" 32mm | | I.D. 1.5" 38mm | | |
| | in | mm | in | mm | in | mm | in | mm | in | mm | O.D. 1.25" 32mm | O.D. 1.44" 36mm | O.D. 1.81" 46mm | O.D. 2.06" 52mm | ft | m | ft | m | ft |
| 20" DISC | 16XX-0820 | 8 | 200 | 20 | 510 | 15 | 380 | 21.75 | 550 | 20.25 | 515 | 60 | 20 | 50 | 15 | 25 | 8 | 20 | 6 |
| | 16XX-1120 | 11.5 | 290 | 20 | 510 | 18.5 | 470 | 21.75 | 550 | 20.25 | 515 | 90 | 30 | 75 | 25 | 40 | 12 | 35 | 10 |
| | 16XX-1520 | 15.5 | 390 | 20 | 510 | 22.5 | 570 | 21.75 | 550 | 20.25 | 515 | 125 | 40 | 100 | 30 | 50 | 15 | 50 | 15 |
| | 16XX-2020 | 20 | 510 | 20 | 510 | 27 | 690 | 21.75 | 550 | 20.25 | 515 | 175 | 50 | 135 | 40 | 80 | 24 | 70 | 20 |
| | 16XX-2420 | 24 | 610 | 20 | 510 | 31 | 790 | 21.75 | 550 | 20.25 | 515 | 200 | 60 | 150 | 45 | 90 | 28 | 80 | 25 |
| | 16XX-2820 | 28 | 710 | 20 | 510 | 35 | 890 | 21.75 | 550 | 20.25 | 515 | 240 | 70 | 200 | 60 | 100 | 32 | 95 | 30 |
| | 16XX-3320 | 33 | 840 | 20 | 510 | 40 | 1020 | 21.75 | 550 | 20.25 | 515 | 275 | 85 | 250 | 75 | 125 | 40 | 120 | 35 |
| 24" DISC | 16XX-0824 | 8 | 200 | 24 | 610 | 15 | 380 | 25.5 | 650 | 23.25 | 590 | 100 | 30 | 75 | 20 | 50 | 15 | 30 | 10 |
| | 16XX-1124 | 11.5 | 290 | 24 | 610 | 18.5 | 470 | 25.5 | 650 | 23.25 | 590 | 150 | 45 | 100 | 30 | 75 | 20 | 50 | 15 |
| | 16XX-1524 | 15.5 | 390 | 24 | 610 | 22.5 | 570 | 25.5 | 650 | 23.25 | 590 | 250 | 75 | 150 | 45 | 100 | 30 | 75 | 25 |
| | 16XX-2024 | 20 | 510 | 24 | 610 | 27 | 690 | 25.5 | 650 | 23.25 | 590 | 300 | 90 | 200 | 60 | 125 | 40 | 100 | 30 |
| | 16XX-2424 | 24 | 610 | 24 | 610 | 31 | 790 | 25.5 | 650 | 23.25 | 590 | 350 | 100 | 250 | 75 | 150 | 45 | 125 | 35 |
| | 16XX-2824 | 28 | 710 | 24 | 610 | 35 | 890 | 25.5 | 650 | 23.25 | 590 | 450 | 130 | 300 | 90 | 175 | 55 | 150 | 45 |
| 28" DISC | 16XX-3324 | 33 | 840 | 24 | 610 | 40 | 1020 | 25.5 | 650 | 23.25 | 590 | 550 | 165 | 350 | 100 | 200 | 60 | 175 | 50 |
| | 16XX-0828 | 8 | 200 | 28 | 710 | 15 | 380 | 29.25 | 750 | 26.25 | 670 | 175 | 50 | 125 | 40 | 100 | 30 | 40 | 12 |
| | 16XX-1128 | 11.5 | 290 | 28 | 710 | 18.5 | 470 | 29.25 | 750 | 26.25 | 670 | 275 | 80 | 200 | 60 | 150 | 45 | 75 | 22 |
| | 16XX-1528 | 15.5 | 390 | 28 | 710 | 22.5 | 570 | 29.25 | 750 | 26.25 | 670 | 375 | 110 | 250 | 75 | 200 | 60 | 125 | 35 |
| | 16XX-2028 | 20 | 510 | 28 | 710 | 27 | 690 | 29.25 | 750 | 26.25 | 670 | 500 | 150 | 350 | 100 | 250 | 75 | 150 | 45 |
| | 16XX-2428 | 24 | 610 | 28 | 710 | 31 | 790 | 29.25 | 750 | 26.25 | 670 | 600 | 180 | 450 | 135 | 300 | 90 | 175 | 50 |
| | 16XX-2828 | 28 | 710 | 28 | 710 | 35 | 890 | 29.25 | 750 | 26.25 | 670 | 700 | 210 | 535 | 160 | 350 | 100 | 225 | 65 |
| | 16XX-3328 | 33 | 840 | 28 | 710 | 40 | 1020 | 29.25 | 750 | 26.25 | 670 | 800 | 250 | 625 | 190 | 400 | 120 | 275 | 85 |

ACCESSORIES

| SUFFIX | DESCRIPTION | DIMENSIONS | | | | | | | | | | | | |
|------------|-----------------------------|------------|-----|----------------|----|--------------|-----|-----------------|-----|-------------------------|-----|---------------------|-----|---|
| | | C | | R | | M | | | | | | | | |
| | | Crank | | Roller Bracket | | Direct Drive | | With Idler Gear | | With Centrifugal Clutch | | With Idler & Clutch | | |
| in | mm | in | mm | in | mm | in | mm | in | mm | in | mm | in | mm | |
| XXCX, XXFX | Guide Rollers: 4-Way* | - | - | 0.44 | 11 | - | - | - | - | - | - | - | - | - |
| XXEX, XXHX | Guide Rollers: 3-Way* | - | - | 2.63 | 67 | - | - | - | - | - | - | - | - | - |
| - | Direct Crank (Side) | 5 | 130 | - | - | - | - | - | - | - | - | - | - | - |
| C | Bevel Crank (Front) | 2.63 | 70 | - | - | - | - | - | - | - | - | - | - | - |
| N/A | Bevel Crank Handle Holder | 2.38 | 60 | - | - | - | - | - | - | - | - | - | - | - |
| H | Hydraulic | - | - | - | - | 2.88 | 75 | 3.75 | 95 | - | - | - | - | - |
| A | Air (Size #4) | - | - | - | - | 3.13 | 80 | - | - | - | - | - | - | - |
| AB | Air (Size #6) | - | - | - | - | 4.75 | 120 | 5.56 | 140 | - | - | - | - | - |
| E | 12 VDC, 1/3 HP | - | - | - | - | 4.25 | 110 | 5 | 130 | 4.25 | 110 | 5 | 130 | - |
| EF | 24 VDC, 1/3 HP | - | - | - | - | 4.25 | 110 | 5 | 130 | 4.25 | 110 | 5 | 130 | - |
| ED | 12 VDC, 1/2 HP, Exp. Proof | - | - | - | - | 6 | 150 | 6.88 | 175 | 6.88 | 175 | 7.88 | 200 | - |
| EB | 24 VDC, 1/2 HP, Exp. Proof | - | - | - | - | 6 | 150 | 6.88 | 175 | 6.88 | 175 | 7.88 | 200 | - |
| EA | 115 VAC, 1/2 HP, Exp. Proof | - | - | - | - | 6 | 150 | 6.88 | 175 | 6.88 | 175 | 7.88 | 200 | - |
| EJ | 230 VAC, 1/2 HP, Exp. Proof | - | - | - | - | 6 | 150 | 6.88 | 175 | 6.88 | 175 | 7.88 | 200 | - |

*Top payout rollers do not affect dimension "H"

REV 1:1



Reelcare

Hose & Cable Reel Specialists

Unit N, Tyson Courtyard
Weldon South Industrial Estate
Corby, Northamptonshire
NN18 8AZ, United Kingdom

Telephone +44 (0) 1536 407 001
Email sales@reelcare.co.uk

Fax +44 (0) 1536 261 491
Web www.reelcare.co.uk

